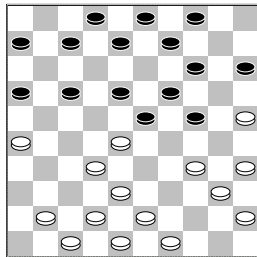


□ Bibbe, M. (Michiel)
 ■ Harkink, E. (Egbert)

GEL-chT DUO-DEZL1 25-10-2013

1.32-28 20-25 2.37-32
 14-20 3.41-37 10-14
 4.31-27 5-10 5.34-30
 25x34 6.39x30 19-23
 7.28x19 14x23 8.30-25
 10-14 9.33-28 13-19
 10.44-39 17-22 11.28x17
 11x31 12.36x27 12-17
 13.39-33 17-22 14.50-44
 22x31 15.37x26 7-11
 16.44-39 11-17 17.33-28
 1-7 18.39-34 20-24
 19.46-41



zwart combineert nu naar dam

[>19.42-37 7-12
 20.47-42 2-7 21.43-39
 9-13 22.37-31 7-11
 (-0.19;-1.98/10)]
 19...17-21 20.26x17
 16-21 21.17x26 18-22
 22.28x17 23-29 23.34x23
 19x46 24.40-34 24-30
 25.35x24 14-20 26.25x14
 9x40 27.45x34 7-11
 28.34-30 11x22 29.30-25
 22-27 30.43-39 27-31
 31.26x37 46x34
 0-2 (0.28/0.43)

□ Wassink, G. (Gerrit)
 ■ Vermeulen, T. (Tim)

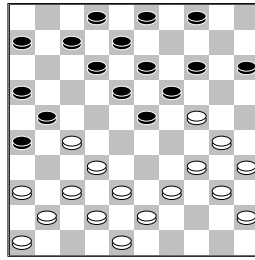
GEL-chT DUO-DEZL1 25-10-2013

1.31-27 17-21 2.33-28
 11-17 3.39-33 21-26
 4.44-39 17-22 5.28x17
 12x21 6.33-28 19-23
 7.28x19 14x23 8.38-33
 10-14 9.34-30 14-19
 10.50-44 20-24 11.40-34
 7-12 12.44-40 5-10
 13.42-38 10-14 14.49-44
 1-7 15.47-42 24-29
 16.33x24 14-20 17.39-33
 20x29 18.33x24 9-14
 19.44-39

(diagram)

14-20

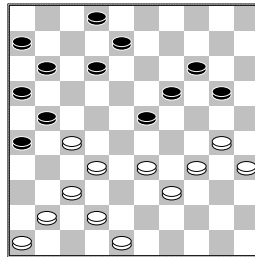
[>19...23-28 20.32x23
 18x20 21.34-29 21x32
 22.37x28 3-9 23.38-33
 (-0.00;0.51/8)]



20.30-25

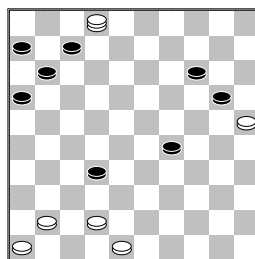
[wit had voordeel kunnen behalen met de volgende manoeuvre:
 >20.27-22 18x27
 21.32-28 20x29
 22.37-31 26x37
 23.42x22 23x32
 24.34x14 4-9 25.38x27
 9x20 26.22-17 21x32
 27.30-25 12x21
 28.25x14 21-27
 29.41-37 32x41
 30.36x47 (0.51;0.05/10)
]

20...20x29 21.34-30
 15-20 22.25x14 19x10
 23.40-34 29x40 24.35x44
 10-14 25.39-33 13-19
 26.44-39 8-13 27.45-40
 4-10 28.40-35 7-11
 29.39-34 23-28 30.33x22
 18-23 31.22-18 13x31
 32.36x27 10-15 33.38-33
 3-8 34.43-39 15-20



wit forceert nu een winnende damcombinatie

[>34...8-13 35.30-24
 19x30 36.34x25 13-19
 37.42-38 15-20
 (0.24;0.96/9)]
 35.33-29 2-7 36.29x18
 12x23 37.37-31 26x28
 38.30-25 21x32 39.39-33
 28x30 40.35x2 23-29



[>40...7-12 41.2-35
 11-17 42.35-40 12-18

43.48-43 14-19
 44.25x14 19x10
 45.42-37 16-21
 46.37x19 21-26
 47.40x21 26x17
 (1.47;2.19/9)]

41.2-35

[geeft nog een remisekans weg, maar zwart profiteert niet. Veiliger is >41.42-38 32x43
 42.48x39 16-21 43.2-35
 21-26 44.35-40 29-33
 45.39x28 20-24 46.40x1
 26-31 47.41-36 31-37
 48.36-31 37x26 49.1-23
 26-31 50.23x10
 (2.19;0.76/9)]

41...7-12

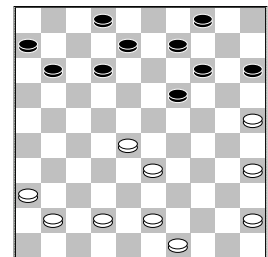
[uitzicht op remise geeft nog >41...20-24
 42.35x37 29-34 43.37x5
 34-40 44.42-38 7-12
 45.5-23 (0.76;2.48/10)
]

42.42-38 32x43 43.48x39
 12-18 44.35-49 29-33
 45.39x28 18-22 46.28x17
 11x22
 2-0 (1.27/1.30)

□ Masselink, G. J. (Jan)
 ■ Lenthe, van, A. H. (Alfr)

GEL-chT DUO-DEZL1 25-10-2013

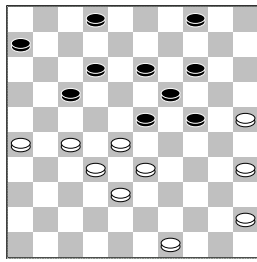
1.31-26 19-23 2.36-31
 14-19 3.33-28 17-22
 4.28x17 11x22 5.41-36
 10-14 6.46-41 5-10
 7.34-29 23x34 8.39x30
 20-25 9.44-39 25x34
 10.39x30 19-23 11.50-44
 14-19 12.44-39 10-14
 13.32-27 7-11 14.30-25
 1-7 15.40-34 14-20
 16.25x14 19x10 17.34-29
 23x34 18.39x30 13-19
 19.30-25 19-23 20.38-33
 23-28 21.42-38 28x39
 22.43x34 10-14 23.47-42
 9-13 24.34-29 3-9
 25.38-33 13-19 26.48-43
 16-21 27.26x28 18-23
 28.29x18 12x21 29.31-27
 21x32 30.37x28 7-12



31.41-37 beter is het open te houden met 35-30-24x34, de overgang naar klassiek blijkt erg

slecht uit te pakken

12-18 32.37-32 15-20
 33.43-38 20-24 34.36-31
 9-13 35.42-37 18-23
 36.31-27 8-12 37.37-31
 11-17 38.31-26



13-18

[vervelender voor wit is 38...6-11 39.45-40 13-18 40.40-34 2-7 en wit moet zich inlaten met offervarianten omdat 34-30 23-29! gewoon vastloopt]

39.45-40 4-9 40.40-34
 9-13 41.34-30 6-11
 42.49-43 11-16 43.43-39
 2-8 44.39-34 17-21
 45.26x17 12x21 46.28-22
 21-26 47.22-17 8-12
 48.17x8 13x2 49.33-28
 2-8 50.28-22 8-13
 51.22-17 24-29 52.38-33
 29x40 53.35x44 23-28
 54.32x12 13-18 55.12x23
 19x50 56.17-12
 1-1 (1.40/1.18)

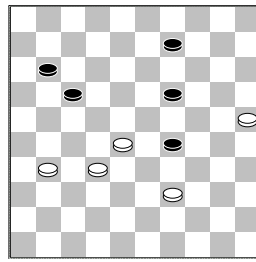
☐ Koerselman, J.

■ Hendriksen, T. (Tim)

GEL-chT DUO-DEZL1 25-10-2013

1.33-29 19-23 2.35-30
 14-19 3.30-25 10-14
 4.38-33 16-21 5.42-38
 21-26 6.32-28 23x32
 7.37x28 26x37 8.41x32
 4-10 9.46-41 19-23
 10.28x19 14x23 11.25x14
 10x19 12.33-28 17-22
 13.28x17 11x22 14.39-33
 6-11 15.44-39 12-17
 16.41-37 5-10 17.47-41
 9-14 18.29-24 19x30
 19.34x25 7-12 20.50-44
 1-7 21.33-29 23x34
 22.40x29 11-16 23.39-33
 7-11 24.32-28 13-19
 25.29-24 19x30 26.25x34
 18-23 27.28x19 14x23
 28.38-32 22-27 29.32x21
 16x27 30.44-40 10-14
 31.34-29 23x34 32.40x29
 8-13 33.37-32 27x38
 34.43x32 14-19 35.41-37
 13-18 36.32-28 2-7
 37.37-32 17-21 38.45-40
 11-17 39.40-35 15-20
 40.35-30 18-23 41.29x18

12x23 42.30-25 20-24
 43.32-27 21x32 44.28x37
 7-11 45.37-32 3-9
 46.33-28 24-29 47.49-44
 29-34 48.44-39 34x43
 49.48x39 23-29 50.36-31



[>50.25-20 29-33
 51.20-15 33x44
 52.15-10 19-23
 53.28x19 44-49 54.10-4
 49x16 55.4x31 17-22
 56.31x13 (-0.08;-0.53/9)
]

50...29-33

[kansrijker is
 >50...19-24 51.32-27
 9-13 52.27-22 29-33
 53.39-34 33-38
 54.34-29 24x33
 55.28x39 17x28
 56.25-20 38-42
 57.20-15 42-47
 58.15-10 47-41
 59.39-34 28-32
 (-0.53;-0.08/10)
]

51.39-34 33x22 52.32-27
 22-28 53.34-29 9-14
 54.29-23 28-32 55.27x38
 19x28 56.31-27 28-32
 57.38-33 32x21 58.33-29
 21-27 59.29-24 27-32
 60.24-20 14-19 61.20-15
 32-37 62.25-20 19-23
 63.20-14 37-41 64.15-10
 41-47 65.14-9
 1-1 (1.30/1.53)

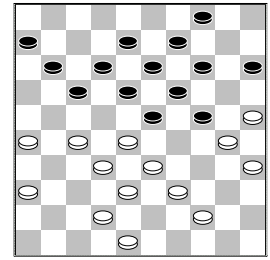
☐ Jansen, N. (Nick)

■ Roeterdink, T. (Tonny)

GEL-chT DUO-DEZL1 25-10-2013

1.34-29 20-24 2.29x20
 15x24 3.40-34 19-23
 4.34-30 14-19 5.45-40
 10-14 6.32-28 23x32
 7.37x28 18-23 8.42-37
 23x32 9.37x28 12-18
 10.41-37 16-21 11.31-26
 17-22 12.28x17 21x12
 13.40-34 12-17 14.47-42
 5-10 15.30-25 7-12
 16.34-30 1-7 17.46-41
 18-23 18.38-32 13-18
 19.43-38 8-13 20.49-43
 24-29 21.33x24 23-28
 22.32x23 18x20 23.37-32
 2-8 24.39-33 20-24
 25.44-39 13-18 26.50-44

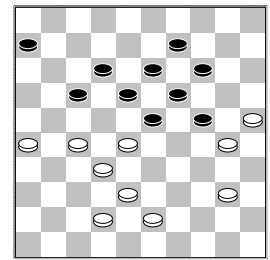
10-15 27.41-37 18-23
 28.37-31 8-13 29.31-27
 12-18 30.33-28 7-12
 31.39-33 3-8 32.43-39



15-20

[>32...11-16 33.39-34
 17-21 34.26x17 12x21
 35.36-31 8-12 36.31-26
 23-29 37.26x8 29x49
 38.8-2 18-23
 (0.03;0.46/9)]

33.48-43 4-10 34.44-40
 10-15 35.40-34 24-29
 36.33x24 20x40 37.35x44
 17-22 38.28x17 11x31
 39.36x27 15-20 40.44-40
 12-17 41.39-33 8-12
 42.33-28 20-24



43.40-35

[een doorbraakje was mogelijk geweest met
 >43.27-22 24x44
 44.22x11 6x17 45.26-21
 17x26 46.28-22 18x27
 47.32x21 26x17
 48.43-39 44x33 49.38x7
 19-23 50.7-2 14-19
 51.2-7 13-18 52.25-20
 17-21 53.42-37
 (0.74;0.04/10)]

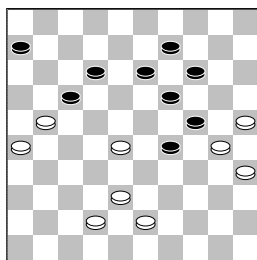
43...23-29

[>43...6-11 44.43-39
 23-29 45.28-23 19x48
 46.30x10 48x34
 47.35-30 34-40
 48.30-24 29x20 49.25x3
 18-22 50.27x16 40-49
 51.3x21 49x5
 (0.04;1.02/9)]
 44.27-22 18x27 45.32x21

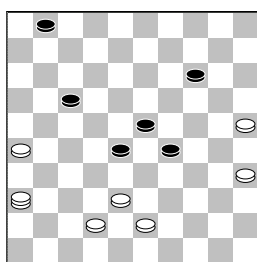
(diagram)

6-11

[>45...29-34 46.30x39
 13-18 47.39-33 9-13
 48.43-39 18-22
 49.39-34 24-30



50.35x24 19x39
 51.33x44 22x33
 52.38x29 13-19
 53.42-38 17-22
 54.44-39 12-18
 (1.02;2.96/9)]
 46.21-16 13-18 47.16x7
 12x1 48.28-23 19x28
 49.30x10 18-23 50.10-4
 9-14 51.4-36

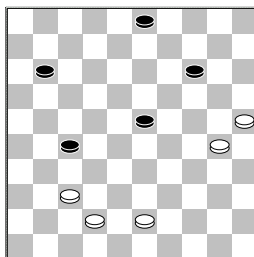


[wordt nu het
 slachtoffer van een zelden
 voorkomende maar altijd
 verrassende Turkse slag.
 Wel winst is >51.4-22
 28-33 52.22x11 33-39
 53.43x34 29x40
 54.35x44 23-29
 55.11-33 29-34
 56.33-22 14-19
 57.22-18 19-24
 58.18x45 (5.94;0.01/9)
]
 51...17-22 52.36x33
 28x37 53.25-20
 1-1 (1.35/1.30)

□ Klein Wassink, B.W. (W.
 ■ Richters, R.A.G. (Ralf
 GEL-chT DUO-DEZL125-10-2013

1.33-28 19-23 2.28x19
 14x23 3.39-33 10-14
 4.32-28 23x32 5.37x28
 16-21 6.44-39 21-26
 7.50-44 26x37 8.41x32
 17-21 9.46-41 11-17
 10.41-37 21-26 11.34-30
 6-11 12.30-25 4-10
 13.47-41 1-6 14.36-31
 18-23 15.28x19 14x23
 16.25x14 10x19 17.41-36
 12-18 18.33-28 7-12
 19.39-33 15-20 20.44-39
 5-10 21.40-34 17-22
 22.28x17 11x22 23.31-27
 22x31 24.36x27 20-24
 25.49-44 10-14 26.27-22

18x27 27.32x21 26x17
 28.33-29 24x33 29.38x7
 2x11 30.39-33 17-22
 31.43-38 19-23 32.34-29
 23x34 33.33-28 22x33
 34.38x40 14-19 35.44-39
 11-17 36.39-33 6-11
 37.40-34 19-23 38.45-40
 17-22 39.35-30 22-27
 40.40-35 13-18 41.30-25
 8-13 42.35-30 9-14
 43.34-29 23x34 44.30x39
 18-23 45.48-43 13-18
 46.33-29 23x34 47.39x30
 18-23



48.43-38 wit zet
 eigenhandig 42 buitenspel
 met verlies tot gevolg
 [>48.30-24 23-28
 49.42-38 11-17
 50.24-20 17-21 51.20x9
 3x14 52.43-39 21-26
 53.39-34 27-31
 54.25-20 31x33 55.20x9
 (-0.04;-5.66/11)]
 48...23-28 49.30-24
 11-17 50.24-20 17-21
 51.20x9 3x14 52.37-31
 27x36 53.42-37 21-27
 54.37-31 36-41 55.31x33
 41-46 56.33-29 14-20
 57.25x14 46x5
 0-2 (1.34/1.30)