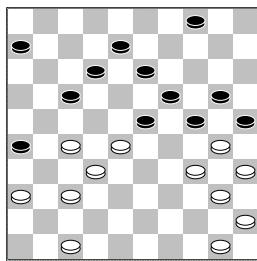
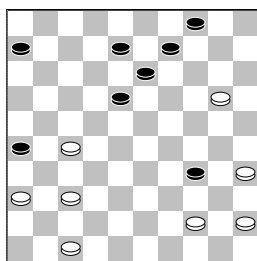


**Roeterdink, G. (Gerrit)**  
 **Masselink, G.J. (Jan)**  
 GEL-chT DEZ2-DUO 08-10-2013  
 1.32-28 19-23 2.28x19  
 14x23 3.37-32 10-14  
 4.41-37 5-10 5.46-41  
 17-21 6.32-27 21x32  
 7.37x19 14x23 8.33-29  
 13-19 9.42-37 10-14  
 10.38-32 8-13 11.48-42  
 16-21 12.31-26 2-8  
 13.26x17 11x22 14.43-38  
 7-11 15.36-31 1-7  
 16.31-26 20-25 17.35-30  
 14-20 18.40-35 20-24  
 19.29x20 15x24 20.39-33  
 22-27 21.32x21 23-28  
 22.33x22 18x16 23.44-40  
 12-18 24.38-33 7-12  
 25.49-43 16-21 26.26x17  
 12x21 27.43-38 21-26  
 28.41-36 8-12 29.38-32  
 3-8 30.32-27 9-14  
 31.42-38 14-20 32.38-32  
 11-17 33.33-28 18-23



34.28-22 beter is de  
 afwikkeling met  
 [ 34.34-29 24x42  
 35.47x38 25x34 36.40x7  
 6-11 37.7x16 13-18 ]  
 34...17x28 35.34-29  
 23x34 36.32x14 20x9  
 37.40x20 25x34 38.50-44  
 12-18



39.36-31  
 [ ziet er slecht uit,  
 maar niet veel beter is  
 >39.47-42 13-19  
 40.42-38 6-11 41.20-15  
 11-16 42.37-32  
 (-0.52;-1.29/11) ]  
 39...13-19 40.47-42  
 19-23 41.42-38 8-12  
 42.20-15 9-14 43.35-30  
 34x25 44.38-33 12-17  
 45.44-39 17-22 46.45-40

14-20 47.15x24 23-29  
 48.24-19 29x38 49.39-33  
 38x29 50.19-13 18x9  
 51.27x18 9-13 52.18x9  
 4x13 53.31-27 13-18  
 54.37-32 29-33 55.40-34  
 6-11 56.34-29 33x24  
 57.32-28 26-31 58.27x36  
 18-23 59.28x30 25x34  
 0-2 (1.08/1.21)

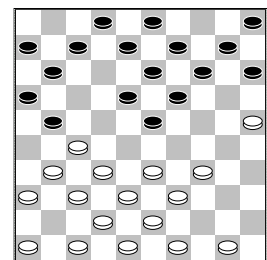
**Bosch, A.A. (Bertus)**  
 **Schutte, T.**  
 GEL-chT DEZ2-DUO 08-10-2013  
 1.34-29 18-23 2.29x18  
 12x23 3.35-30 7-12  
 4.30-25 1-7 5.40-34  
 12-18 6.45-40 7-12  
 7.50-45 2-7 8.34-29  
 23x34 9.40x29 19-23  
 10.44-40 23x34 11.40x29  
 20-24 12.29x20 15x24  
 13.39-34 10-15 14.31-26  
 4-10 15.45-40 18-23  
 16.32-28 23x32 17.37x28  
 17-22 18.28x17 11x22  
 19.33-29 24x33 20.38x29  
 7-11 21.42-38 22-28  
 22.38-32 28x37 23.41x32  
 16-21 24.26x17 11x22  
 25.43-38 6-11 26.48-43  
 12-17 27.47-41 11-16  
 28.38-33 17-21 29.43-39  
 22-27 30.41-37 27x38  
 31.33x42 13-18 32.42-38  
 9-13 33.38-33 8-12  
 34.46-41 21-27 35.37-32  
 27x38 36.33x42 18-22  
 37.41-37 12-18 38.40-35  
 14-20 39.25x14 10x19  
 40.34-30 5-10 41.30-24  
 19x30 42.35x24 10-14  
 43.39-33 3-8 44.37-32  
 22-27 45.32x21 16x27  
 46.42-37 8-12 47.49-43  
 18-22 48.43-38 12-18

notatie hierna niet meer te  
 volgen  
 1-1 (1.50/1.50)

**Beltman, J. (Johan)**  
 **Richters, R.A.G. (Ralf)**  
 GEL-chT DEZ2-DUO 08-10-2013  
 1.32-28 17-22 2.28x17  
 11x22 3.37-32 12-17  
 4.32-27 6-11 5.34-30  
 19-23 6.30-25 14-19  
 7.25x14 9x20 8.40-34  
 7-12 9.34-30 20-25  
 10.44-40 25x34 11.39x30  
 1-6 12.30-25 10-14  
 13.33-29 23x34 14.40x29  
 19-23 15.35-30 23x34  
 16.30x39 13-19 17.50-44  
 19-23 18.45-40 4-10  
 19.40-35 14-20 20.25x14  
 10x19 21.38-33 15-20  
 22.44-40 17-21 23.42-38  
 21x32 24.38x27 11-17

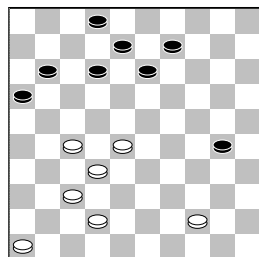
25.47-42 5-10 26.42-38  
 17-21 27.40-34 21x32  
 28.38x27 12-17 29.43-38  
 10-15 30.48-43 8-13  
 31.34-29 23x34 32.39x30  
 19-23 33.30-24 20x29  
 34.33x24 3-8 35.31-26  
 22x31 36.36x27 17-22  
 37.41-36 22x31 38.36x27  
 6-11 39.46-41 11-17  
 40.41-37 17-22 41.37-32  
 22x31 42.26x37 18-22  
 43.37-31 22-28 44.32-27  
 13-19 45.24x13 8x19  
 46.31-26 15-20 47.43-39  
 23-29 48.26-21 19-24  
 49.39-34 29x40 50.35x44  
 24-29 51.21-17 20-24  
 52.27-21 16x27 53.17-11  
 28-33 54.11-6 33x42  
 55.6-1 29-33 56.1-18  
 27-32 57.18-13 42-47  
 58.13x30  
 1-1 (1.33/1.48)

**Bibbe, M. (Michiel)**  
 **Beuzel, J.H. (Herman)**  
 GEL-chT DEZ2-DUO 08-10-2013  
 1.33-28 18-23 2.39-33  
 12-18 3.44-39 7-12  
 4.31-27 1-7 5.36-31  
 20-24 6.41-36 15-20  
 7.34-30 10-15 8.30-25  
 4-10 9.40-34 24-30  
 10.35x24 20x40 11.45x34  
 17-22 12.28x17 12x21



13.31-26 verliest  
 geforceerd een schijf  
 [ >13.33-28 14-20  
 14.25x14 9x20 15.39-33  
 20-24 16.34-29 23x34  
 17.28-23 19x39  
 18.38-33 39x28 19.32x1  
 21x41 20.46x37 13-19  
 21.1x40 (0.03;-0.82/10)  
 ]  
 13...19-24 14.26x17  
 11x31 15.36x27 24-29  
 16.33x24 14-20 17.25x14  
 9x40 18.50-44 40-45  
 19.44-40 45x34 20.39x30  
 15-20 21.30-25 20-24  
 22.38-33 7-12 23.42-38  
 24-29 24.33x24 23-28  
 25.32x23 18x20 26.25x14  
 10x19 27.38-32 5-10  
 28.43-38 10-14 29.48-43  
 14-20 30.47-42 20-25

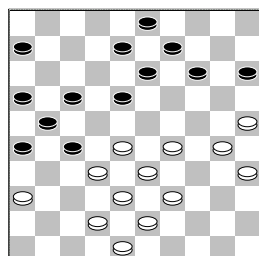
31.49-44 19-24 32.43-39  
 6-11 33.38-33 3-9  
 34.33-29 24x33 35.39x28  
 25-30



36.44-39  
 [ >36.46-41 16-21  
 37.27x18 13x33  
 38.32-28 33x22  
 39.37-32 8-13 40.42-38  
 13-19 41.41-36  
 (-1.27;-6.23/11) ]  
 36...16-21 37.27x18  
 13x44  
 0-2 (0.52/0.46)

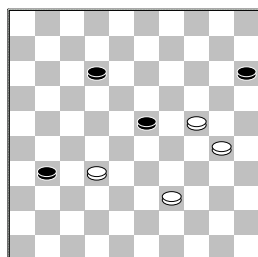
□ Dimmendaal, G. (Gerard)  
 ■ Vries, de, J. (Jaap) [D]  
 GEL-chT DEZ2-DUO 08-10-2013

1.32-28 18-23 2.38-32  
 12-18 3.42-38 7-12  
 4.47-42 1-7 5.34-29  
 23x34 6.39x30 17-21  
 7.30-25 21-26 8.40-34  
 11-17 9.34-30 7-11  
 10.44-40 17-21 11.49-44  
 12-17 12.44-39 19-23  
 13.28x19 14x23 14.25x14  
 10x19 15.32-28 23x32  
 16.37x28 26x37 17.41x32  
 5-10 18.46-41 10-14  
 19.41-37 4-10 20.30-25  
 19-23 21.28x19 14x23  
 22.39-34 10-14 23.34-29  
 23x34 24.40x29 21-26  
 25.50-44 17-21 26.44-39  
 11-17 27.45-40 17-22  
 28.40-34 2-7 29.34-30  
 7-12 30.32-28 22-27  
 31.37-32 12-17



32.29-24  
 [ mist een goede  
 damcombinatie >32.25-20  
 14x23 33.28x19 13x24  
 34.36-31 26x28 35.33x2  
 21-26 36.2x30 27-31  
 37.30-34 31-36  
 38.34-23 9-13 39.23-46

(0.72;0.14/10) ]  
 32...14-19 33.28-23  
 18x20 34.25x23 8-12  
 35.30-24 6-11 36.23-19  
 3-8 37.24-20 13x24  
 38.20x29 8-13 39.35-30  
 17-22 40.32-28 11-17  
 41.30-25 9-14 42.39-34  
 12-18 43.28-23 13-19  
 44.23x12 17x8 45.34-30  
 19-23 46.29x18 22x13  
 47.30-24 8-12 48.33-29  
 14-19 49.38-33 19x30  
 50.25x34 12-18 51.34-30  
 27-31 52.36x27 21x32  
 53.43-38 32x43 54.48x39  
 13-19 55.33-28 16-21  
 56.42-38 18-22 57.28x17  
 21x12 58.29-24 19-23  
 59.38-32 26-31

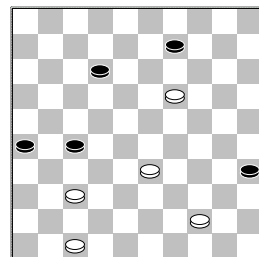


60.30-25  
 [ remise is >60.32-28  
 23x32 61.24-19 32-37  
 62.19-13 31-36 63.13-9  
 37-41 64.39-34 41-46  
 65.30-24  
 (-0.15;-9.99/13) ]  
 60...31-36  
 [ >60...23-29 61.24x33  
 31-36 62.25-20 15x24  
 63.33-28 36-41  
 64.28-23 41-47  
 65.23-19 24x13  
 (-9.99;-0.09/16) ]  
 61.32-27  
 [ >61.32-28 23x32  
 62.25-20 32-37  
 63.20-14 37-41 64.14-9  
 41-46 65.9-3 12-18  
 66.3-9 18-23 67.39-33  
 36-41 68.9-31 15-20  
 69.24x15 41-47 70.31-4  
 (-0.09;-9.99/14) ]  
 61...36-41 62.27-22  
 23-29 63.24x33 41-47  
 64.33-28 47-41  
 0-2 (1.27/1.42)

□ Kersten, E. (Bob)  
 ■ Stegeman, G. H. (Gerrit)  
 GEL-chT DEZ2-DUO 08-10-2013

1.32-28 17-22 2.28x17  
 12x21 3.31-26 7-12  
 4.26x17 12x21 5.37-32  
 2-7 6.36-31 20-25  
 7.32-28 21-26 8.34-29  
 26x37 9.41x32 19-23  
 10.28x19 14x34 11.40x29

7-12 12.46-41 1-7  
 13.41-37 10-14 14.45-40  
 14-20 15.40-34 20-24  
 16.29x20 25x14 17.35-30  
 4-10 18.30-25 16-21  
 19.32-28 21-26 20.37-32  
 11-16 21.34-29 18-23  
 22.29x18 13x22 23.28x17  
 12x21 24.32-27 21x32  
 25.38x27 14-20 26.25x14  
 10x19 27.43-38 8-13  
 28.42-37 3-8 29.38-32  
 5-10 30.49-43 15-20  
 31.43-38 20-25 32.44-40  
 19-24 33.40-34 10-15  
 34.32-28 7-12 35.38-32  
 24-30 36.28-23 30-35  
 37.50-44 15-20 38.48-43  
 9-14 39.27-22 14-19  
 40.23x14 20x9 41.33-29  
 12-17 42.22x11 6x17  
 43.29-24 17-22 44.24-19  
 13x24 45.34-30 25x34  
 46.39x19 22-27 47.32x21  
 16x27 48.43-38 8-12  
 49.38-33



27-31  
 [ >49...12-17 50.33-29  
 26-31 51.37x26 27-32  
 52.29-24 32-38  
 53.24-20 38-43  
 54.44-39 43x34  
 55.19-14 35-40 56.14x3  
 40-44 57.3x21 44-49  
 58.21-16 (0.35;1.01/11)  
 ]  
 50.37-32 31-36 51.33-29  
 12-17 52.29-24 26-31  
 53.24-20 17-22 54.19-14  
 9-13 55.14-10 13-19  
 56.10-5 22-28 57.32x14  
 31-37 58.14-9 36-41  
 59.47x36 37-42 60.5-37  
 42x31 61.36x27  
 2-0 (1.32/1.40)